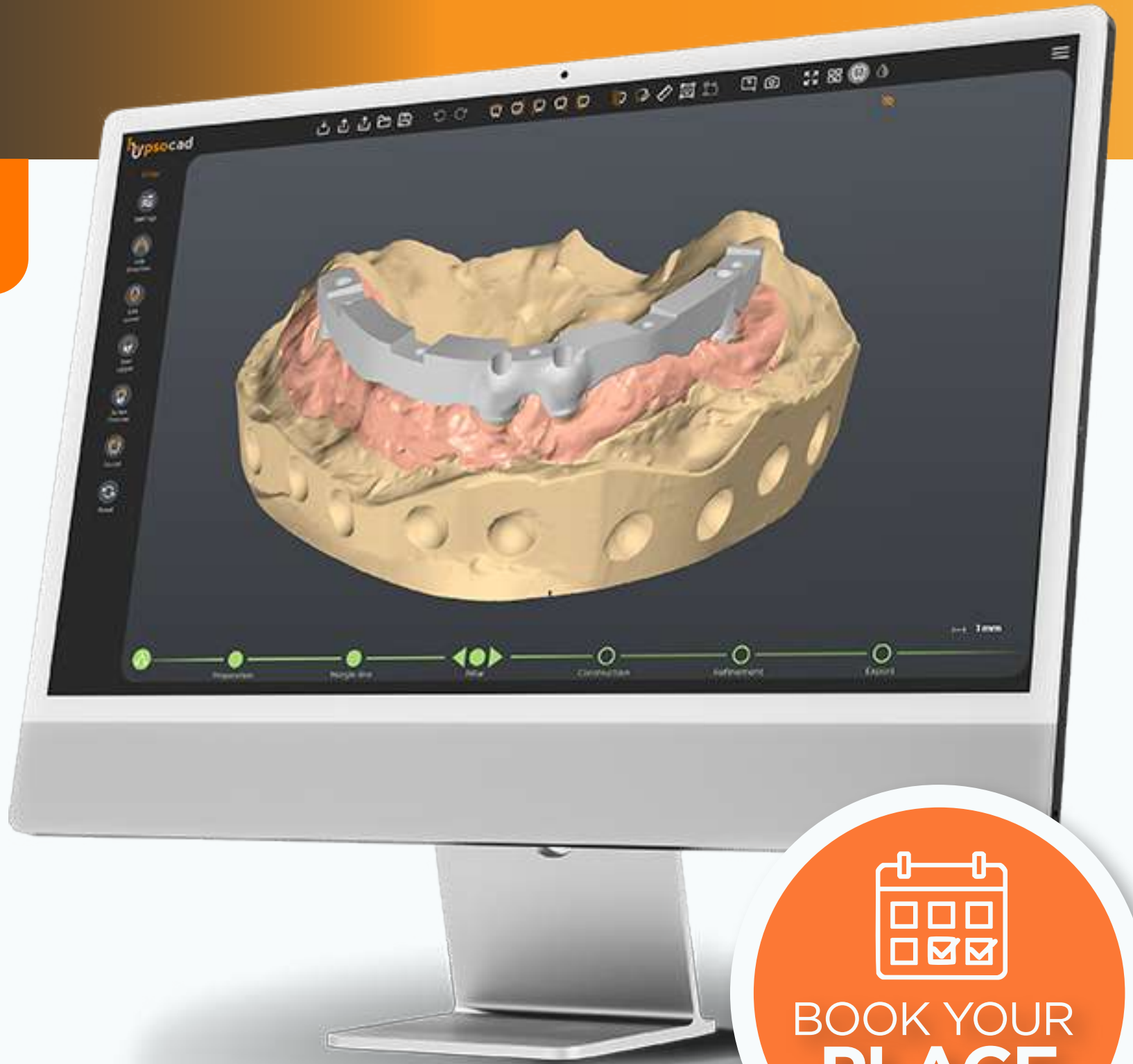




LEVEL 1

LIGHTNING

The **HypsoCAD Lighting course** provides a hands-on introduction to the digital ecosystem of dental design.



BOOK YOUR
PLACE

COURSE CONTENT

Introduction to HypsoCAD and its digital architecture.

Software interface and guided workflow.

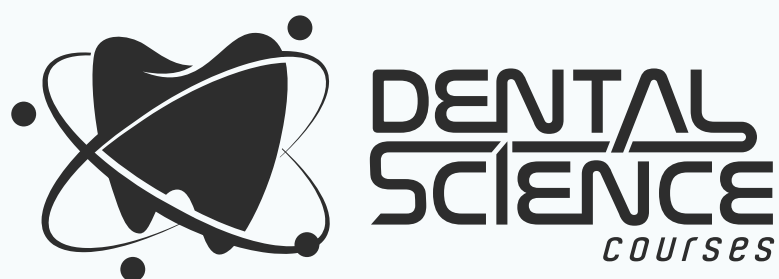
Importing STL files and model alignment.

Design of single-unit restorations: crowns, inlays, and onlays.

Digital sculpting and adjustment tools.

File export and communication with CAM systems and 3D printing

Exclusive distributor



education@dentalsciencecourses.com
WhatsApp: +1 786-933-0855

